

HT FIFTH WHEELS

# *Sandpiper* HT

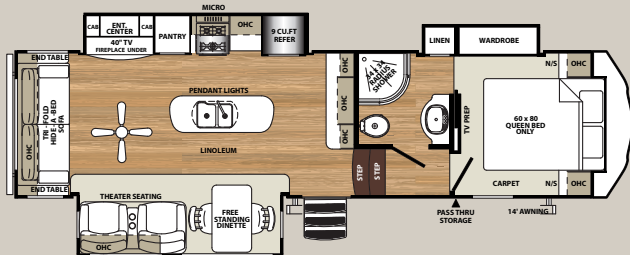


# 2950TRIK

ASH  
DECOR

## OPEN LIVING

The 2950TRIK is a couples friendly unit that is towable with a standard duty truck. At around 8500 pounds and 33 feet in length, towing and maneuvering should be a breeze. This open concept floorplan is great for entertaining or watching your favorite movie. When its time to turn in, the upper deck bath and bedroom area is your private oasis.







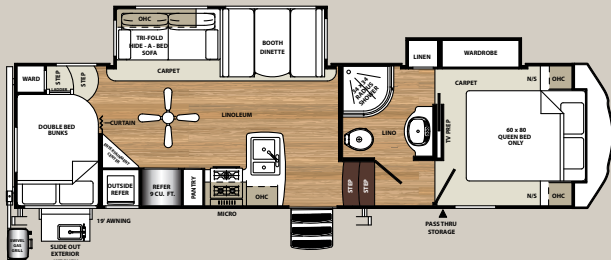


# 3275DBOK

## CEDAR DECOR

### THOUGHTFUL DESIGN

The 3275DBOK is our best towing bunkhouse. At 8100 pounds and 32' 4" in length, towing this family friendly unit should be a breeze. Standard features on this floorplan include a convenient outside kitchen and large bunk beds. Whether your travels take you on a weekend trip or something farther from home the 3275DBOK is a great unit for the whole family to enjoy.





## FREE\* SANDPIPER HT PACKAGE

\*LIMITED TIME OFFER



### ROLLER SHADES THROUGHOUT

Both stylish and functional the roller shades look great and provide privacy when you want it.



### BACKUP CAMERA PREP

Our backup camera prep allows for easy installation of a backup camera for added safety.



### KING WIFI EXTENDER

Stay connected anywhere you go with an on board gateway between all your web-enabled devices and a local WiFi source



### SIDE SECURITY CAMERA PREP

Our units are ready for the latest technology to deliver the best camping experience.





# INTERIOR FEATURES



**A** Handcrafted fascia gives the slide-out a distinguished look

**B** Porcelain foot flush toilet, easy to use, easy to clean

**C** Exclusive Denver Mattress

**D** The Tri-fold hide-a-bed sofa offers you and your guests more sleeping options

**E** LED HDTV with premium soundbar with DVD Player.

**F** Mocha accented crown molding gives the Sandpiper kitchen a truly residential finish

**G** Real wood drawers on soft close, full extension, ball bearing drawer guides

**H** Contemporary master bedroom headboard with integrated LED lighting

**I** Theater seating with LED lighting.

**J** Contemporary ceiling fan

**K** Enjoy the warmth and comfort of the electric fireplace

**L** The Sandpiper HT Luxury package includes stainless steel appliances



## EXTERIOR FEATURES



A



B



C



**A** Insulated heavy duty pass-thru storage area with Slam Lock baggage doors

**B** Wall mounted digital thermostat

**C** Power front jacks with quick release snap pins

**D** Radius triple entry steps

**E** The quick connect spray port is great for easy clean up

**F** 110v outlet and cable outlet conveniently located in the pass-thru storage area

**G** Sandpiper's lighted docking station

**H** Gel coat fiberglass protects from UV rays and prevents yellowing and cracking.

**I** Drip rail with extra long drip spouts help prevent black streaking

**J** 15" D-Rated tires with aluminum rims

**K** Enclosed underbelly protects your coach and improved airflow allows for a sturdier ride

**L** OAV control panel allows you to do everything from operate your awning and lights to monitoring holding tank levels



D



E



F



G



H



I



J



K

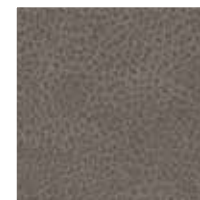


L

# STANDARD AND OPTIONAL FEATURES

## DECOR OPTIONS

ASH INTERIOR



CEDAR INTERIOR



### EXTERIOR FEATURES

- Color match high gloss gel coated colored exterior fiberglass
- Painted two tone aerodynamic fiberglass front cap with improved turning radius
- Enclosed and heated dump valves
- Large tinted windows with 80/20 UV prohibitor
- Radius triple entry step
- "One Touch" Dometic® electric awning w/LED light strip
- Power front jacks with spring loaded snap pins
- 15" Radial tires-D Rated
- Automotive-style fender skirts
- Hitch light
- Porch light with interior switch
- 30 lb. double LP tanks with auto change over
- 2 exterior speakers
- Rain gutters with extra long drip spouts (prevents black streaking)
- Insulated heavy duty slam lock baggage doors
- Exterior foldable grab handle
- Unobstructed pass thru area
- Upgraded aluminum rims
- 4,400 Lb. Axles
- Friction hinge entry door

### INTERIOR FEATURES

- Stainless steel appliances
- Beauflor® rustic wood plank linoleum
- Decorative backsplash
- Two color coordinated interiors (Ash, Cedar)
- Soft close full extension drawer glides
- Stainless steel under mounted kitchen sink
- LED lighting throughout
- Solid surface countertops
- Recessed residential lighting
- Accent paneling in slideouts
- Accent lighting over dinette
- Mocha accent crown molding over kitchen cabinets
- Extra large picture windows throughout
- Vented side windows in slideouts
- TV antenna with booster
- Solid wood drawer fronts with birch sides
- Upgraded raised panel cabinet doors with designer rails
- Bedroom slideout fascia
- Denver pillow top mattress
- Teddy Bear® bunk mats
- 40" flatscreen TV (32" std. in 3275DBOK)
- Premium soundbar with built in DVD player
- Designer window treatment accented per decor
- 9 cu. ft. stainless refrigerator
- Ceiling fan
- Tri-fold hide-a-bed sofa
- Residential stain resistant carpet
- Center mounted A/C unit for even cooling
- Quilted bedspread

### APPLIANCES/ SYSTEMS

- High Performance Dometic® 15K A/C (second A/C prep)
- 9 cu. ft. refrigerator
- Digital thermostat for living room and A/C
- Floor ducted 35,000 BTU furnace
- OTR stainless steel microwave
- Three burner high output range with 22" oven
- Interior monitor panel for holding tanks
- Satellite and cable hookup with RG-6 cable for high quality picture
- Porcelain foot flush toilets
- 10 Gal. DSI water heater
- 65 Amp converter
- EZ Breeze® power fan in bathrooms

### CONSTRUCTION

- Welded aluminum-framed, vacuum bonded laminated superstructure
- 3/8" roof decking (full walk-on roof)
- Cambered powder coated frame with rust prohibitor
- Fully enclosed underbelly
- 5" truss roof rafters
- R-10E sidewall construction
- Laminated sidewalls
- Laminated slideout walls
- Laminated floors

### FOR YOUR SAFETY

- Smoke alarm
- Fire extinguisher
- Breakaway switch (battery hook-up required)
- Dead-bolt lock on entry door
- LP/CO2 gas detector
- Fire escape windows

### POPULAR OPTIONS

- Four point electric level up
- Free standing dinette IPO booth dinette (3275DBOK)
- Theater seating IPO recliners (3250IK)
- Second air conditioner in bedroom (ducted)
- Heated holding tanks (12V)
- R-38E roof & all floors insulation
- Electric stabilizer jacks - 1 pair
- Roto flex hitch pin
- Central vacuum
- Slide room awnings (all slides)
- Spare tire kit (15")
- Roof ladder
- 2 Folding dinette chairs

### OPTIONAL POLAR TECH PACKAGE

- Thermal pane windows
- Heated holding tanks
- R-38E roof & all floor insulation
- 40K BTU furnace

### FREE SANDPIPER HT PACKAGE (LIMITED TIME OFFER)

- Roller shades throughout
- King WiFi extender system
- Back up camera prep
- Security camera prep

### SANDPIPER HT LUXURY PACKAGE

- 9 Cu. Ft. Stainless refer
- Stainless appliance package
- Denver pillowtop mattress
- 30" OTR microwave
- Kitchen backsplash
- Soft close residential drawers & cabinet doors
- Docking station
- Color matched gelcoated fiberglass exterior
- 40" Flat screen television (most models)
- Premium sound bar with DVD
- Power fan in bathroom(s)
- Tri fold hide-a-bed sofa
- "One touch" Dometic electric awning w/LED light strip
- LED interior lighting throughout
- Slam lock baggage doors
- 15K air conditioner w/prep for second A/C
- Residential kitchen faucet
- Aluminum wheels
- Water filter system
- Rustic wood Beauflor™ flooring
- Aerodynamic two tone painted fiberglass front cap
- 10 Gal DSI water heater





## BUILT TO LAST

The Sandpiper is built to last using only the best materials to ensure that your coach is in it for the long haul. Careful engineering, well appointed craftsmanship and an uncompromising sense of pride go into every fifth wheel that we produce. Rest assured that your Sandpiper is built for luxury living.



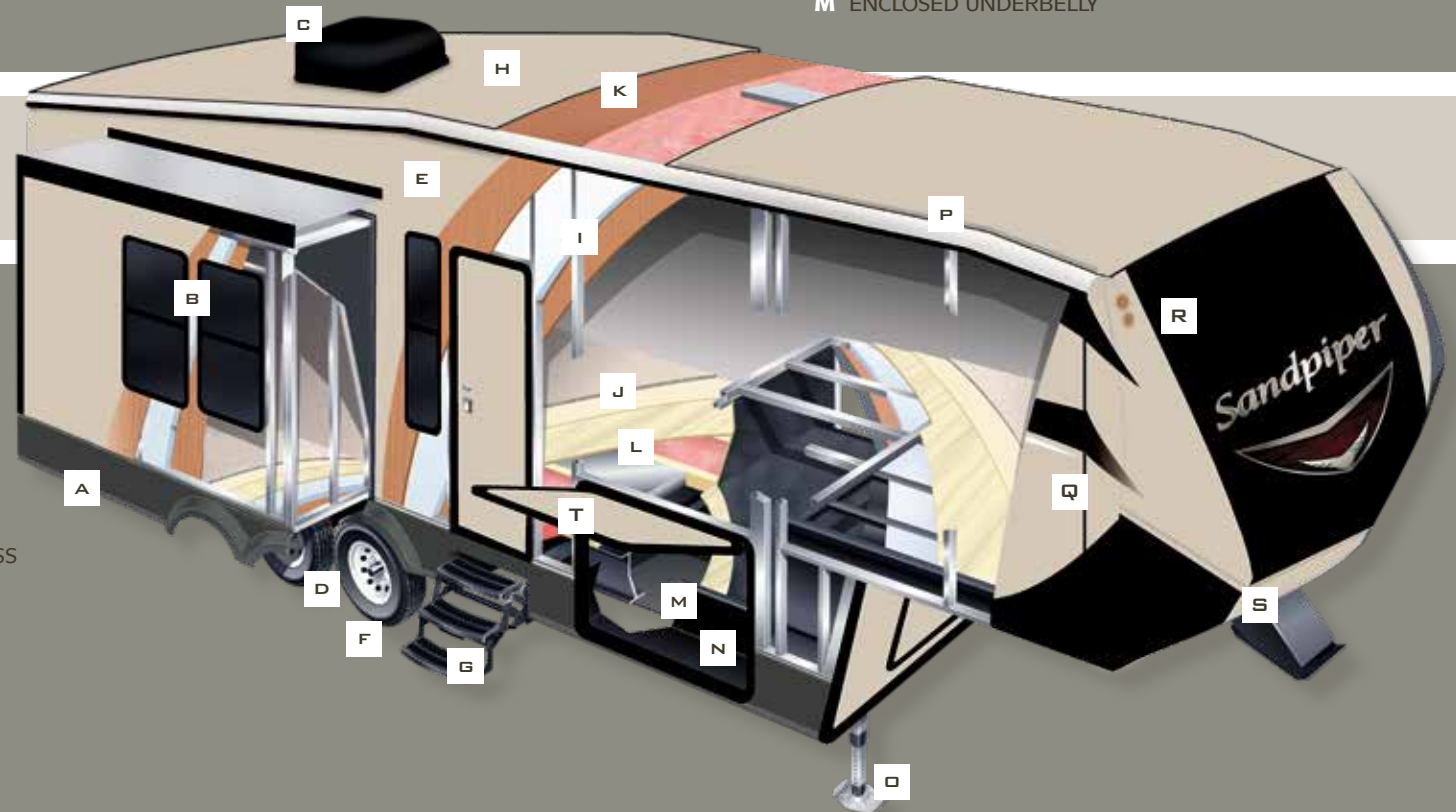
- A** ROLLED ALUMINUM SIDE SKIRTING
- B** TINTED SAFETY GLASS WINDOWS (80%)
- C** THERMOSTAT CONTROLLED DUCTED 15K BTU AIR CONDITIONING
- D** DEXTER AXLES WITH AUTO ADJUST BRAKES

- E** LAMINATED VACUUM BONDED ALUMINUM SIDEWALLS
- F** 15" D-RATED RADIAL TIRES (STANDARD)
- G** RADIUS TRIPLE ENTRY STEPS
- H** SEAMLESS ONE PIECE ROOFING (12 YR. WARRANTY)

- I** 2" BLOCK FOAM INSULATION
- J** DELUXE STAIN RESISTANT CARPET WITH PADDING
- K** 3/8" ROOF DECKING (FULL WALK-ON ROOF)
- L** 5/8" TONGUE AND GROOVE PLYWOOD FLOORING
- M** ENCLOSED UNDERBELLY

## SOLID CONSTRUCTION

- N** I-BEAM POWDER-COATED FRAME W/ RUST INHIBITOR
- O** POWER FRONT JACKS WITH QUICK RELEASE SNAP PINS
- P** SLEEK RADIUS ROOF
- Q** PAINTED COLOR MATCHED HIGH GLOSS GEL-COATED FIBERGLASS EXTERIOR
- R** TWO TONE PAINTED GEL-COAT FIBERGLASS FRONT CAP (STANDARD)
- S** IMPROVED FRONT CAP FOR SHARPER TURNING RADIUS
- T** INSULATED SLAM LOCK BAGGAGE DOORS





## FLOORPLANS + SPECIFICATIONS

MODEL	2850RL	2950TRIK	3250IK	3275DBOK
HITCH	1,465	1,445	1,502	1,271
UVW	7,868	8,588	8,354	8,155
GVWR	10,000	10,000	10,000	10,000
CARGO	2,132	1,412	1,646	1,845
LENGTH (BUMPER TO HITCH)	31'5"	32'11"	32'1"	32'4"
HEIGHT	12'10"	12'10"	12'10"	12'10"
AWNING	14'	14'	14'	19'
GRAY	60	60	60	60
BLACK	30	30	30	30
FRESH	47	47	47	47

PLEASE SEE BACK COVER FOR MORE INFORMATION REGARDING WEIGHTS.

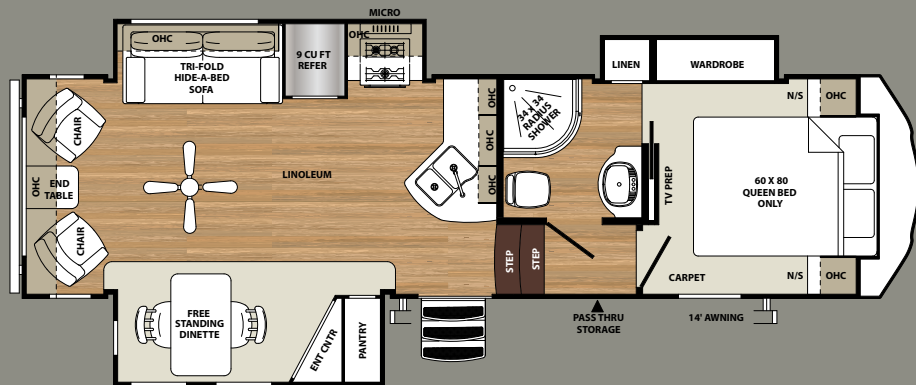


### EXTERIOR KITCHEN

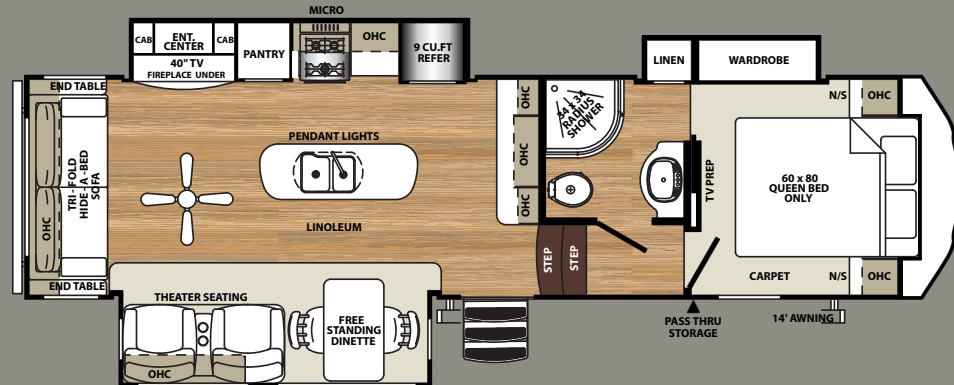
THE SANDPIPER HT 3275DBOK EXTERIOR KITCHEN INCLUDES: BUMPER MOUNTED GAS GRILL, SINK WITH HOT AND COLD WATER AND DURABLE EXTERIOR COUNTERTOP.

# Sandpiper

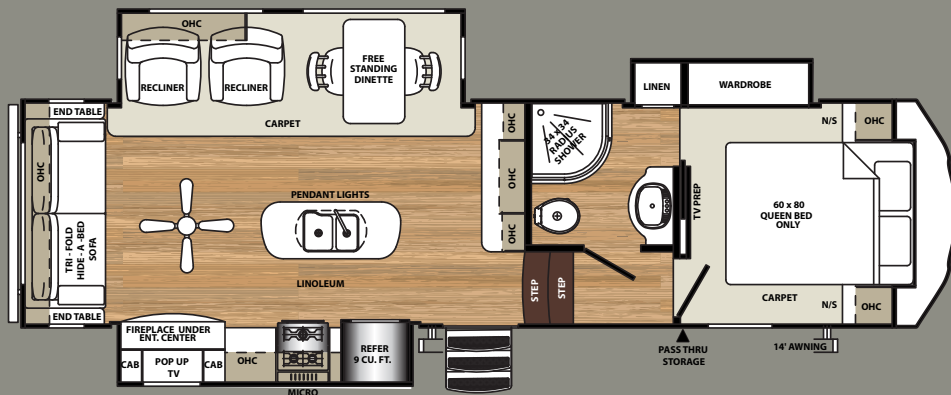




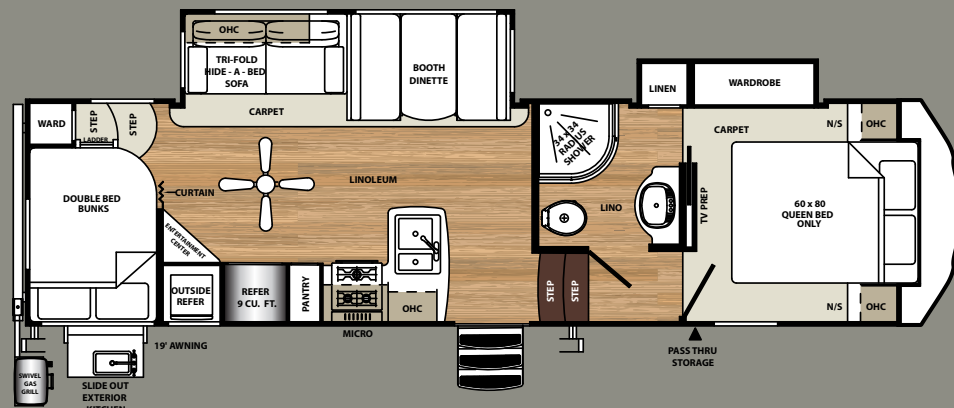
2850RL



2950TRIK



3250IK



3275DBOK

GVWR (Gross Vehicle Weight Rating) - is the maximum permissible weight of the unit when fully loaded. It includes all weights, inclusive of all fluids, cargo, optional equipment and accessories. For safety and product performance do NOT exceed the GVWR.

GAWR (Gross Axle Weight Rating) - is the maximum permissible weight, including cargo, fluids, optional equipment and accessories that can be safely supported by a combination of all axles.

UVW (Unloaded Vehicle Weight)\* - is the typical weight of the unit as manufactured at the factory. It includes all weight at the unit's axle(s) and tongue or pin and LP Gas. The UVW does not include cargo, fresh potable water, additional optional equipment or dealer installed accessories.

\*Estimated Average based on standard build optional equipment.

CCC (Cargo Carrying Capacity)\*\* - is the amount of weight available for fresh potable water, cargo, additional optional equipment and accessories. CCC is equal to GVWR minus UVW. Available CCC should accommodate fresh potable water (8.3 lbs per gallon). Before filling the fresh water tank, empty the black and gray tanks to provide for more cargo capacity.

\*\* Estimated average based on standard build optional equipment

Each Forest River RV is weighed at the manufacturing facility prior to shipping. A label identifying the unloaded vehicle weight of the actual unit and the cargo carrying capacity is applied to every Forest River RV prior to leaving our facilities.

The load capacity of your unit is designated by weight, not by volume, so you cannot necessarily use all available space when loading your unit.

All information contained in this brochure is believed to be accurate at the time of publication. However, during the model year, it may be necessary to make revisions and Forest River, Inc., reserves the right to make all such changes without notice, including prices, colors, materials, equipment and specifications as well as the addition of new models and the discontinuance of models shown in this brochure. Therefore, please consult with your Forest River dealer and confirm the existence of any materials, design or specifications that are material to your purchase decision.



# Sandpiper



## PRE-DELIVERY INSPECTION FACILITY

20,000 square feet of quality assurance. The bare essentials for a premium product. This state-of-the-art facility gives immediate daily feedback to production for quality assurance in every unit built.



[www.ForestRiverBuyLocal.com](http://www.ForestRiverBuyLocal.com)



**FREE MEMBERSHIP**  
to Forest River Owners' Group

[www.forestriverfrog.com](http://www.forestriverfrog.com)



## Learn More

Scan this barcode using a QR Reader on your smart phone to learn more about Forest River.



A Berkshire Hathaway company.

Forest River, Inc.  
55470 C.R. 1, Elkhart, IN 46515  
(574) 389-4600  
[www.forestriverinc.com/Sandpiper](http://www.forestriverinc.com/Sandpiper)  
[www.forestriveraccessories.com](http://www.forestriveraccessories.com)

## YOUR LOCAL SANDPIPER DEALER